



YOUR **TRAINING** GUIDE



Zurich



Lufthansa
Aviation Training

Home of Training Competence


KEY MAP

 Coffee Break Room

 CTD

 Defibrillator

 Disabled toilet

 Fire protection

 First aid

 Lift

 Lockers

 Restroom Women, Men

 Rest Room

 Shower

 Tram Station

CTD Cabin Training Device

FFS Full Flight Simulator

FNPT Flight Navigation Procedure Trainer

FTD Flight Training Device Level 2

IPT Integrated Procedure Trainer

MRT Mixed Reality Trainer


 Lufthansa Aviation Training

TABLE OF CONTENTS

Location

Lufthansa Aviation Training Center	4
------------------------------------	---

Directions

Directions by Aircraft, Car, Public Transport	5
---	---

Access

Access to the Building and Training Devices	6
---	---

Training Facilities

Overview Building	7
Overview Simulators	8

Floor Plans

Building / Level 0	10
Building / Level E1 & E2	11
Building / First Floor	12
Building / Second Floor	13
Building / Third Floor	14

Services

Services of Lufthansa Aviation Training	15
Food and Beverages	16
Lockers and Parking	17
Customer Satisfaction Management	18



LOCATION / LUFTHANSA AVIATION TRAINING CENTER

[More Information](#)
Training Facilities p.7

The Lufthansa Aviation Training Center Zurich is located near Zurich Airport.

DIRECTIONS / DIRECTIONS BY AIRCRAFT, CAR, PUBLIC TRANSPORT

Aircraft

You can take a taxi from the terminal to the Training Center at Cherstrasse 1, Opfikon. Alternatively, you can take the tram (line 10 or 12) from the airport's bus/tram terminal to "Rümlang, Bäuler" (3 stops). From there, it is a three-minute walk to the Training Center.

Car

Lufthansa Aviation Training is located close to the A1 motorway towards Berne/Basel. The closest exits are "Zürich Seebach" and "Glattbrugg". Please note that there is no visitor parking available. Please park at the Airport and take tram No. 10 or 12 to our training center (5-minute tram-ride to tram stop "Rümlang, Bäuler").

Public Transport

From downtown Zurich to LATC ZRH:

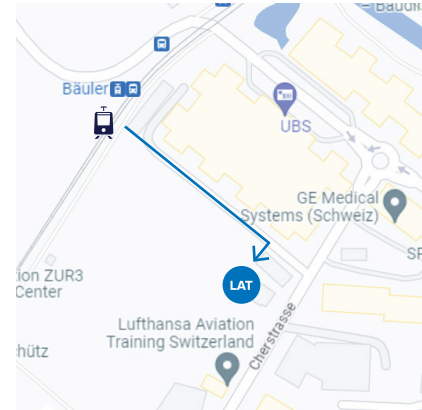
- Train S3, S9 and S15 to "Glattbrugg" (about 10 min)
- Train S7 to "Opfikon" (about 15 min)

There are direct connections between 05:39 and 00:09, also on weekends and public holidays.

From Zurich Airport to LATC ZRH:

- Tram 10/12 (5 min) and Bus 510 (5 min) to "Rümlang, Bäuler"
- Bus 768 to "Glattbrugg Post" (7 min)

Timetables:
for buses and trams: www.zvv.ch
for trains: www.sbb.ch



ACCESS / ACCESS TO THE BUILDING AND TRAINING DEVICES

Building access and check-in for simulator training

Access to the building is granted with an entitled company badge or QR-Code which is issued after completing your online registration with all required information. The QR-Code is valid for six months and must be renewed proactively. The link to our eRegistration tool can be found here:

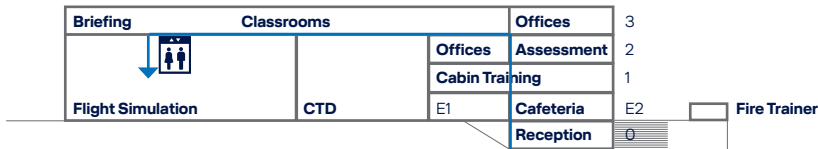
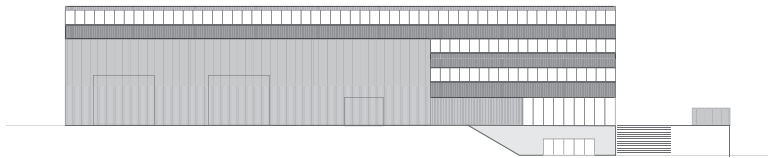
<https://eservices.lufthansa-aviation-training.com/web/eregistrationzrh/>

Additionally, to access the simulators, an entitled badge or a check-in for the session are needed.

For simulator check-in please contact our reception upon arrival or use the check-in station in the reception area or by the simulator entrance gate on the first floor outside opening hours. Please visibly carry your company badge on you at all times inside the building.

TRAINING FACILITIES / OVERVIEW BUILDING

Covering an area of 11,000 square meters, the Lufthansa Aviation Training Center in Zurich unites the complete infrastructure of an aviation training center under one roof, including the Flight School and Assessment Center. Five state-of-the-art full-flight simulators with technical rooms and flexible work stations offer everything that meets today's requirements for leading-edge airline training. In another hall, there are five fully equipped cabin trainers for cabin crew training. In addition, there are workshop rooms, focus, training and briefing rooms as well as a cafeteria and catering area, which can be used for mobile work.



Access to flight simulator hall via 3rd floor.

TRAINING FACILITIES / OVERVIEW SIMULATORS

Full-Flight Simulators Airbus Floor

Airbus A220 (FT123)	First Floor	p. 12
---------------------	--------------------	--------------

Airbus A320-200 (FT120)	First Floor	p. 12
-------------------------	--------------------	--------------

Airbus A330-200/ 340-300 (FT121)	First Floor	p. 12
-------------------------------------	--------------------	--------------

Full-Flight Simulator Boeing Floor

Boeing 777-300ER (FT122)	First Floor	p. 12
--------------------------	--------------------	--------------

Full-Flight Simulators Embraer Floor

Embraer E190-E2 (FT124)	First Floor	p. 12
-------------------------	--------------------	--------------

Full-Flight Simulators Rega Floor

Challenger 650 (FT125)	First Floor	p. 12
------------------------	--------------------	--------------

H145/AW169 (FT126)	First Floor	p. 12
--------------------	--------------------	--------------

Flight Training Device Level 2 Floor

Airbus A320 (FTD01)	First Floor	p. 12
---------------------	--------------------	--------------

Flat Panel Trainers (IPT) Airbus Floor

Airbus A220 (PT23)	Third Floor	p. 14
--------------------	--------------------	--------------

Airbus A3xx (PT20)	Third Floor	p. 14
--------------------	--------------------	--------------

Flat Panel Trainer (IPT) Boeing Floor

Boeing 777 (PT22)	Third Floor	p. 14
-------------------	--------------------	--------------

Other Training Devices Floor

FNPT Diamond DA-42 TDI	Second Floor	p. 13
------------------------	---------------------	--------------

Airbus VR Procedure Trainer	Third Floor	p. 14
-----------------------------	--------------------	--------------

MRT DA42	Third Floor	p. 14
----------	--------------------	--------------

TRAINING FACILITIES / OVERVIEW SIMULATORS

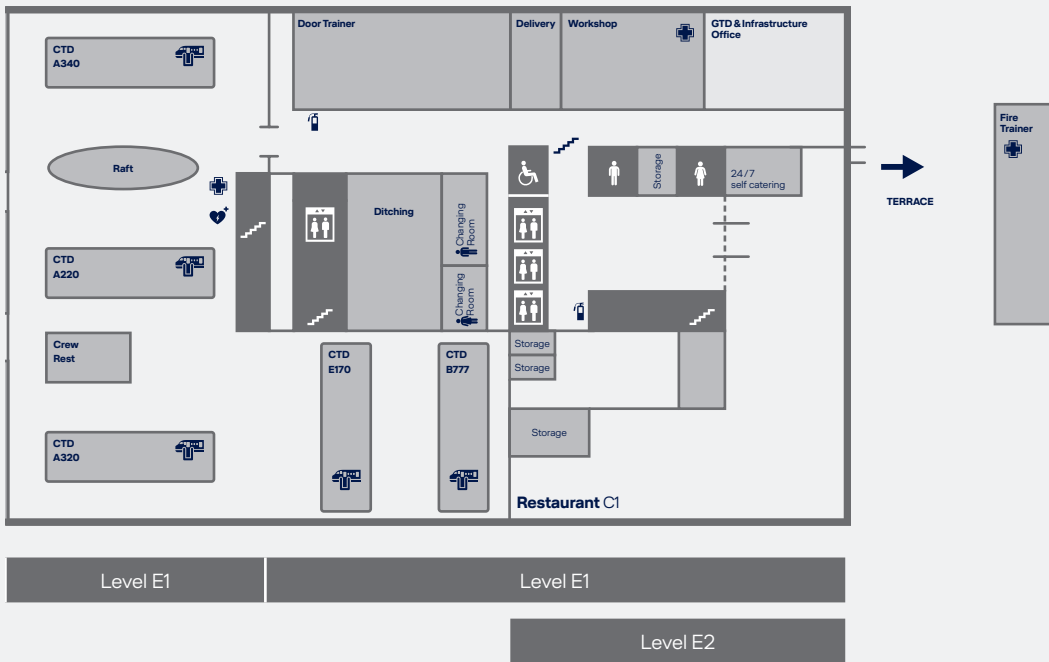
Safety Training Devices		Floor
CTD Airbus A220	Level E1	p. 11
CTD Airbus A320	Level E1	p. 11
CTD Airbus A330/340	Level E1	p. 11
CTD Boeing 777-300	Level E1	p. 11
CTD Embraer E170	Level E1	p. 11
Doortrainer Airbus A220	Level E1	p. 11
Doortrainer Airbus A320/321	Level E1	p. 11
Doortrainer Airbus A330/340	Level E1	p. 11
Doortrainer Embraer E190-E2	Level E1	p. 11
Flight Deck Access Trainer	Level E1	p. 11
Pilot Incapacitation Trainer	Level E1	p. 11
Raft	Level E1	p. 11
Slides	Level E1	p. 11
Real Fire Fighting Trainer	Level E2 (next to terrace)	p. 11
Emergency Trainer	First Floor	p. 12
Equipment Parcours	First Floor	p. 12
Medical Mock-Up	First Floor	p. 12
Medical Trainer	First Floor	p. 12

Service Training Devices		Floor
Beauty & Hair	First Floor	p. 12
Service Parcours	First Floor	p. 12
Service Training short-haul	First Floor	p. 12
Service Training long-haul Y-Class	First Floor	p. 12
Service Training long-haul C-Class	First Floor	p. 12



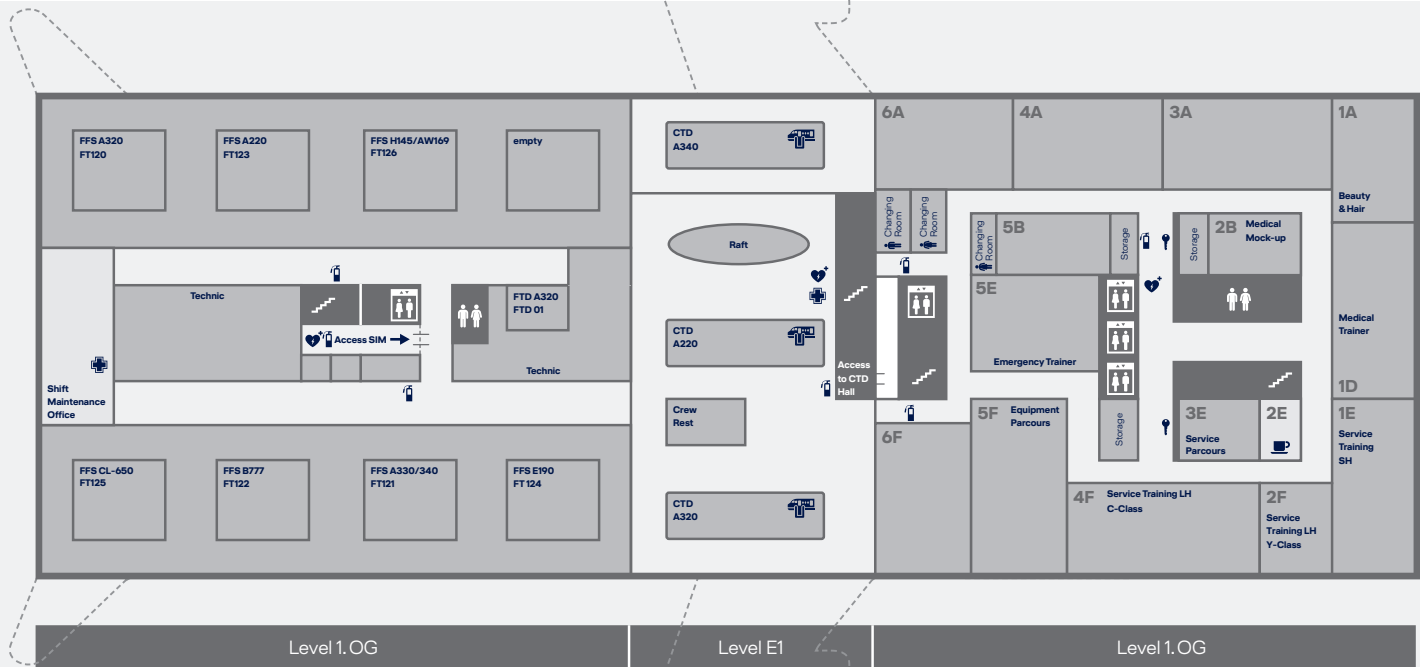
FLOOR PLANS / LEVEL 0

The entrance and the reception are located on level 0.



FLOOR PLANS / LEVEL E1 & E2

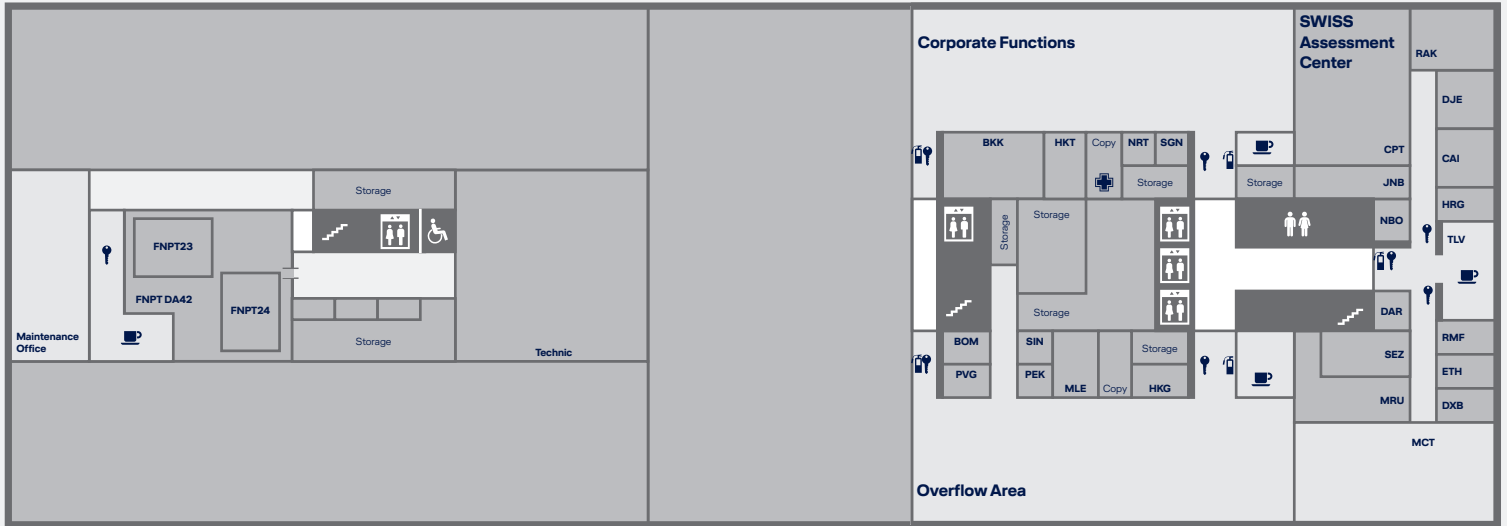
The cabin trainers and the door trainers are located on level E1. And the cafeteria is based on level E2.



FLOOR PLANS / FIRST FLOOR

The service training, beauty, medical and equipment training rooms as well as some classrooms and the emergency trainer are situated on the first floor.

The simulators can only be accessed via the third floor. Please follow the signs.



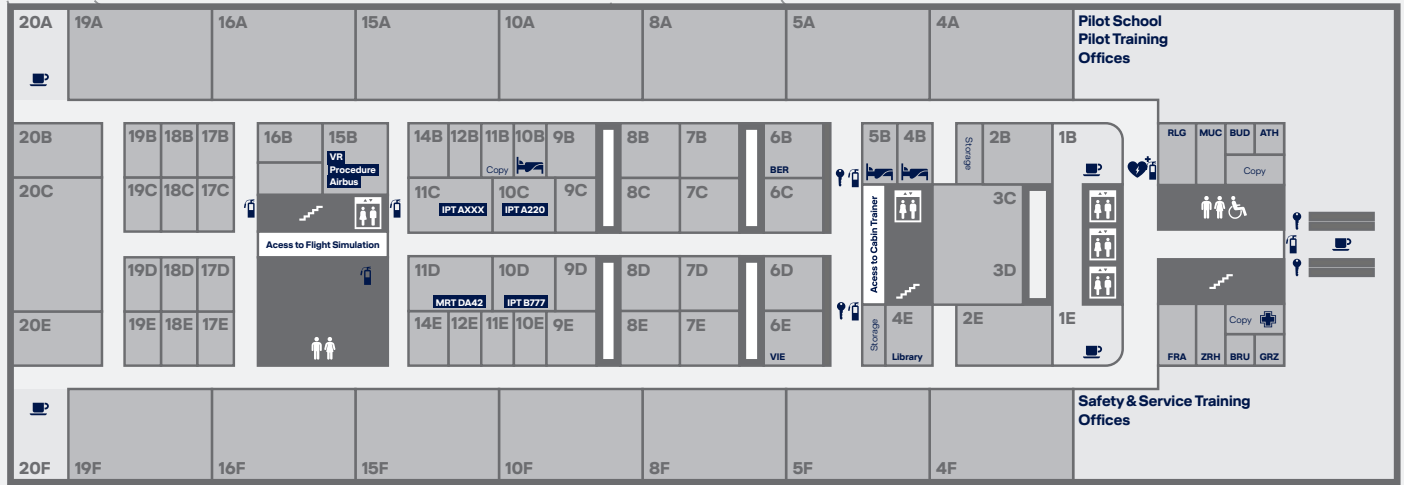
Level 2.OG

Level E1

Level 2.OG

FLOOR PLANS / SECOND FLOOR

The LAT administrative offices and the SWISS Assessment Center are located on the second floor. And also the FNPTs are located here but can only be accessed via the third floor.



Level 3. OG

FLOOR PLANS / THIRD FLOOR

The Classrooms, Briefing Rooms, IPTs, MRT, Airbus VR Procedure Trainer and Pilot School/Pilot Training and Safety and Service Training Offices are located on the third floor.

The third floor provides access to the flight simulation hall and the FNPTs.

SERVICES / SERVICES OF LUFTHANSA AVIATION TRAINING

Group Services of Lufthansa Aviation Training

24/7 Helpline

Phone: +49 69 696 72 444

Reception Desk Zurich

Our reception desk is available to support you and provide you with useful tips and information during your stay at LATC ZRH.

Opening hours: Mon–Fri 7:00 a.m. to 5:00 p.m.

Phone: +41 44 564 5900

E-mail: empfang_zrh@lat.dlh.de

Printer-Service

The “Mail to Print” function is now available at LATC ZRH: Send an e-mail with an attached PDF to print.ch@lat.dlh.de. You will receive a PIN Code by email. With this PIN you can print your document on the printers listed below. Just enter your PIN in the Password/PIN field on the printer.

PRN_005 – 3rd floor, room 3_11B (close to briefing rooms)

Internet/WI-FI

Corporate and public WI-FI is available throughout the building. Connect with “WLAN LAT CH Public” and register with your mobile number including country code. You will receive a SMS with username and password. Please do not delete this message! Enter

username and password. SWISS employees have access to the regular SWISS WLAN.

Taxi-Service

To order your taxi contact the reception desk or use the QR Code.



Username: LAT

Password: LAT20

SERVICES / FOOD AND BEVERAGES

Restaurant / Self-catering / Vending Machines

If you fancy a coffee, a snack, a sandwich or a hot lunch, head over to our restaurant C1 on level E2 that is open from 7:00 a.m. to 2:30 p.m. from Monday to Friday. Hot meals are available from 11:00 a.m. to 01:30 p.m. The restaurant is closed on weekends and occasionally on public holidays. Please note the information on the screens.

There is a 24/7 catering area where you can buy sandwiches, salads and meals to heat up in the provided microwaves or heat up your own food when the cafeteria is not open.

Drinks and vending machines are also provided on every floor in the lounge areas.



More Information
Training Facilities Overview p.7

SERVICES / LOCKERS AND PARKING

Baggage and Lockers

There is a storage room for suitcases next to the reception desk during reception hours. Lockers for smaller bags are provided opposite the reception desk as well as on the first and third floor. Long-time lockers with a personal key are available on the third floor upon request. Please contact: michael.buehrer@lat.dlh.de

Parking

Please note that there is no visitor parking available. Please park at the Airport and take tram No. 10 or 12 to our training center (5-minute tram-ride to tram stop “Rümlang, Bäuler”).

SERVICES / CUSTOMER SATISFACTION MANAGEMENT

We value your feedback

As a company with a strong customer focus, we do everything we can to provide the finest service possible. Your suggestions or criticism helps us improve. We look forward to receiving your comments. Please e-mail us at info@lat.dlh.de, or visit our website lufthansa-aviation-training.com and use the contact form in the contact area.

Lufthansa Aviation Training Switzerland AG
Cherstrasse 1
8152 Opfikon
Switzerland

Contact

Phone: +41 44 564 5900

E-mail: empfang_zrh@lat.dlh.de
lufthansa-aviation-training.com

© Lufthansa Aviation Training, 2024